

# FXSOLAR Pole Rack System

**FXSOLAR Pole Rack System (PR)** is a ground solar PV mounting system that would be applied for uneven landforms. Each PR could support 6, 8 or 10 modules. An engineered mechanism also enables the tilt angle of modules to be adjustable from 10 to 60 degrees.



## FXSOLAR Pole Rack System

### Technical Parameters

Installation Site	Ground	Wind Load	32m/s
Foundation	Rammed Post, Concrete Base or Grund Screw	Snow Load	1.6KN/M2
Tilt Angle	10-60°	Ground Clearance	200-2000mm
Applicable Module	Framed or Frameless	Module Orientation	Portrait or Landscape
Design Standard	AS/NZS 1170, DIN 1055, JIS C 8955: 2011		
	International Building Code: IBC 2009 California Building Code: CBC 2010		
Material	Aluminum Al6005-T5 (Anodized)/ Steel Q235B (Hot-Dip Galvanized)	Color	Silver or Customized
Fastener	Steel (Dacromet Coated)	Warranty	10 Years
Small Components	Aluminum Al6005-T5 (Anodized)	Rammed Depth of Post	1500-2500MM

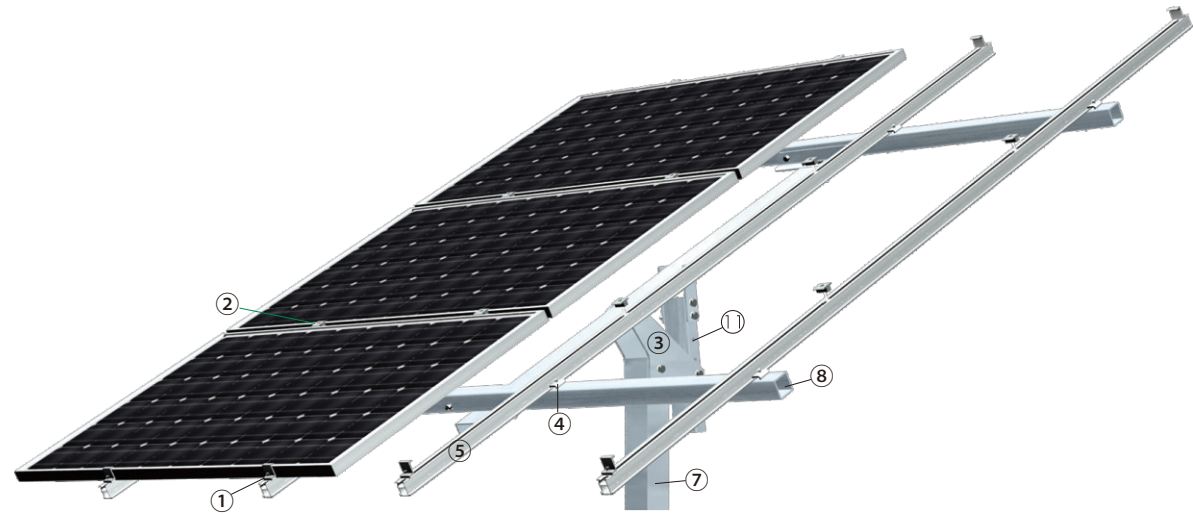
### Advantages

1. The PR could be adapted to various landform, including hills or other uneven terrains;
2. The specially designed quadrate post ensures the PR to fit into various soil conditions;
3. The engineered "adjustive pole" enables the PR to adjust tilt angle from 10 to 60 degrees to realize maximum power generation in different seasons;
4. The PR could be flexibly designed to mount 6, 8 or 10 solar modules, by which PR has a more competitive price.



## FXSOLAR Pole Rack System

### Preview



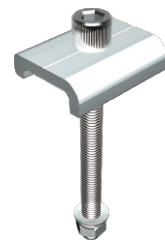
1. End Clamp Kit



2. Inter Clamp Kit



3. Post Connector



4. C Clamp Kit



5. Rail 45



6. Splice for Rail 45



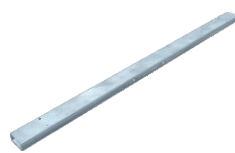
7. Quadrate Post



8. Beam



9. Beam Connector



10. Girder



11. Adjustable Pole



12. Adjustable Pole Jointer

### Component List

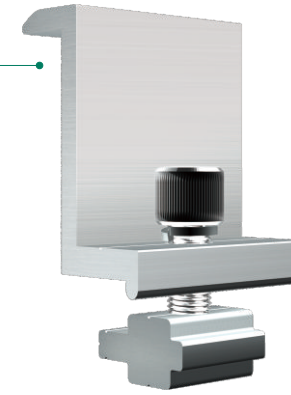
No.	Item	No.	Item	No.	Item
01	End Clamp Kit	05	Rail 45	09	Beam Connector
02	Inter Clamp Kit	06	Splice for Rail 45	10	Girder
03	Post Connector	07	Quadrate Post	11	Adjustive Pole
04	C Clamp Kit	08	Beam	12	Adjustive Pole Jointer

## FXSOLAR Pole Rack System

### Component Details

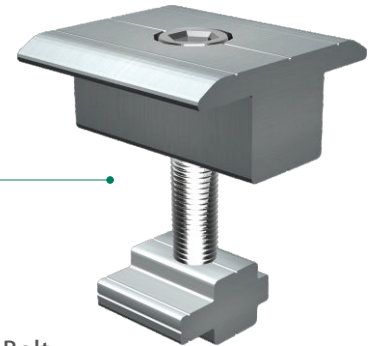
#### FX-EC-ST End Clamp Kit

End Clamp  
Cross Module  
Spring Washer M8.4  
Hexagon Socket Head Bolt



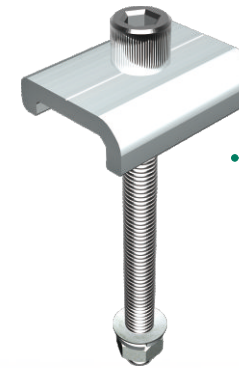
#### FX-IC-U27 U27 Inter Clamp Kit

U27 Inter Clamp  
Cross Module  
Spring Washer M8.4  
Hexagon Socket Head Bolt



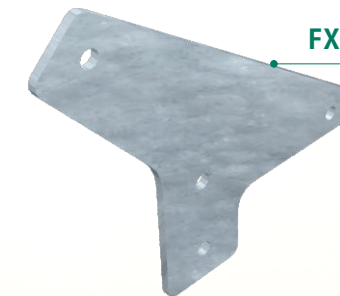
#### FX-PR-CC C Clamp Kit (with dedicated nut)

C Clamp  
Cross Module  
Washer M8  
Spring Washer M8.4  
Hexagon Socket Head Bolt



#### FX-PR-PC Post Connector

Specification: L333  
Material:  
Steel Q235B (Hot-Dip Galvanized)



#### FX-R-45/50 Rail 45/50

Standard Length: 3100mm  
Standard Length: 4100mm  
Standard Length: 5100mm



#### FX-SP-45/50 Splice for Rail 45/50

Specification: L260  
Flange Head Self-Tapping Screw ST6. 3\*19





**Component Details**

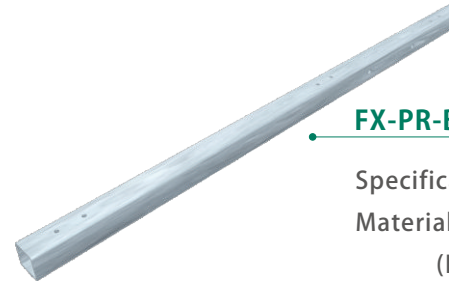
**FX-PR-QP Quadrate Post**

Specification: L2500-3500  
Material: Steel Q235B (Hot-Dip Galvanized)



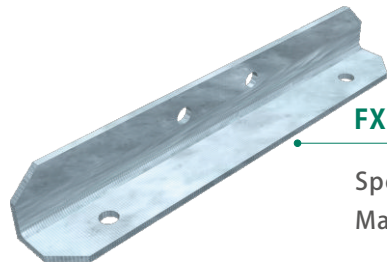
**FX-PR-B Beam**

Specification: L2800-3500  
Material: Steel Q235B (Hot-Dip Galvanized)



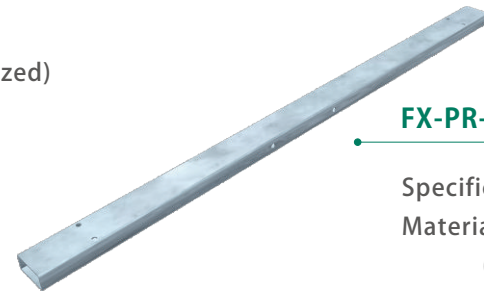
**FX-PR-BC Beam Connector**

Specification: L350  
Material: Steel Q235B (Hot-Dip Galvanized)



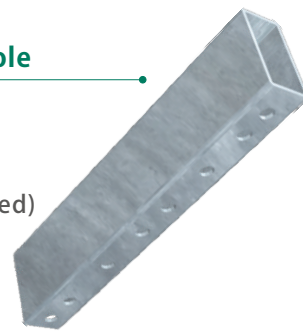
**FX-PR-G Girder**

Specification: L2000-3000  
Material: Steel Q235B (Hot-Dip Galvanized)



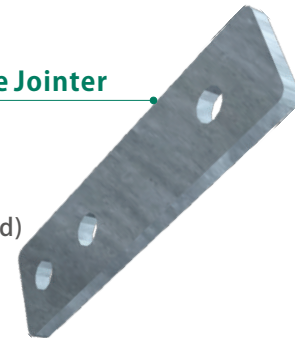
**FX-PR-AP Adjustable Pole**

Specification: L410  
Material: Steel Q235B (Hot-Dip Galvanized)

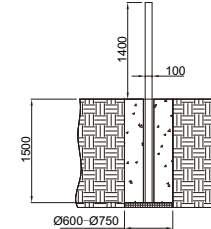


**FX-PR-AJ Adjustable Pole Jointer**

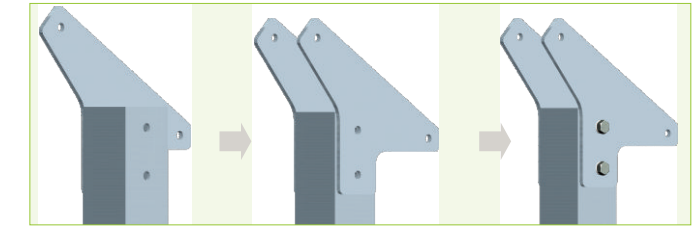
Specification: L186  
Material: Steel Q235B (Hot-Dip Galvanized)



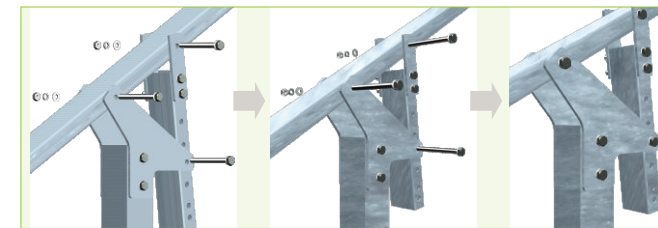
**Installation Guide**



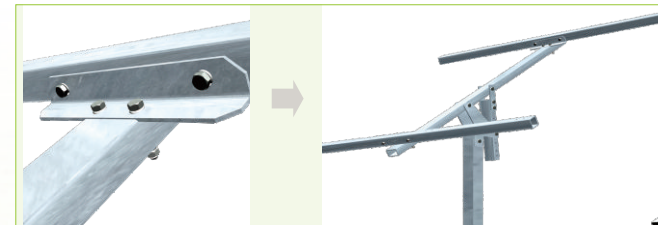
1. Bury the Quadrate Post in the ground according to solution drawings, and pour concrete to stabilize the post;



2. Connect Post Connectors to the Quadrate Post



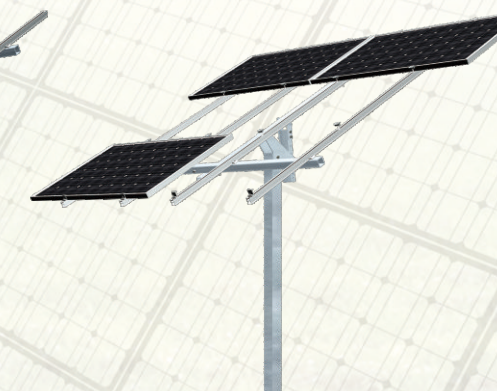
3. Connect the Girder to the Post Connector via the holes on them, and then install the Adjustable Pole likewise



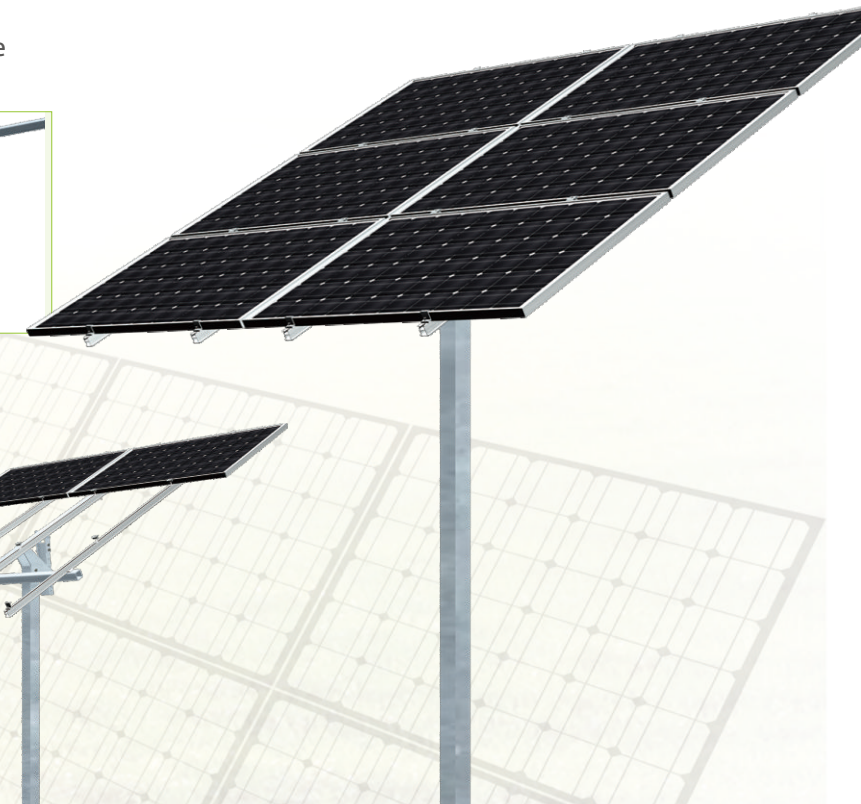
4. Fasten Beams to the Girder by Beam Connectors



5. Install Rails 45/50 on Beams



6. Fasten solar modules by Inter Clamp Kits and End Clamp Kits



7. The installation is complete